



**Product identity:** Roll Oil on 150mg  
**Laboratory ID:** 19-010195-0007

**Client/Metric ID:**  
**Sample Date:**

**Summary**

**Potency:**

<b>Analyte</b>	<b>Result (%)</b>		<b>CBD-Total</b>	0.523%
CBD	0.523		<b>THC-Total</b>	< 0.006%
CBC†	0.00415		(Reported in percent of total sample)	

**Terpenes:**

Analyte	Percent by weight	Percent of Total	Analyte	Percent by weight	Percent of Total
a-pinene†	0.132	29.14%	Linalool†	0.130	28.70%
β-Caryophyllene†	0.0620	13.69%	(R)-(+)-Limonene†	0.0464	10.24%
(-)-Isopulegol†	0.0448	9.89%	Geranyl acetate†	0.0210	4.64%
cis-β-Ocimene†	0.0164	3.62%	<b>Total Terpenes†</b>	<b>0.453</b>	<b>100.00%</b>

**Microbiology:**

*Less than LOQ for all analytes.*



**Customer:** Nirvana CBD  
  
**Product identity:** Roll Oil on 150mg  
**Client/Metric ID:** .  
**Sample Date:**  
**Laboratory ID:** 19-010195-0007  
**Relinquished by:** Patrick Mulcahy  
**Temp:** 26.6 °C  
**Net volume:** 30 ml  
**Serving Size #1:** 1 g

**Sample Results**

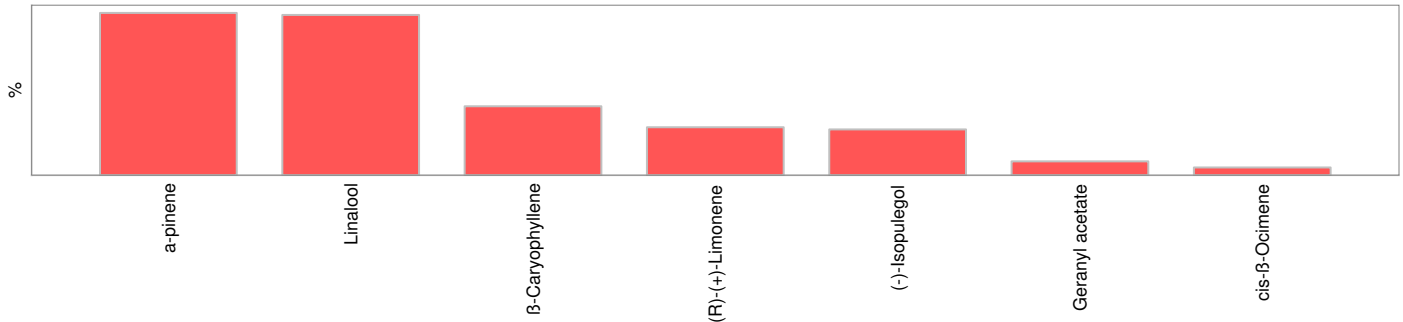
Potency	Method J AOAC 2015 V98-6			Units %	Batch 1907845	Analyze 08/27/19 12:59 PM
Analyte	As Received	Dry weight	LOQ	Notes		
CBC†	0.00415		0.0033		<ul style="list-style-type: none"> <li>● CBD</li> <li>● CBC</li> </ul>	
CBC-A†	< LOQ		0.0033			
CBC-Total†	< LOQ		0.0061			
CBD	0.523		0.0033			
CBD-A	< LOQ		0.0033			
CBD-Total	0.523		0.0061			
CBDV†	< LOQ		0.0033			
CBDV-A†	< LOQ		0.0033			
CBDV-Total†	< LOQ		0.0061			
CBG†	< LOQ		0.0033			
CBG-A†	< LOQ		0.0033			
CBG-Total†	< LOQ		0.0061			
CBL†	< LOQ		0.0033			
CBN	< LOQ		0.0033			
Δ8-THC†	< LOQ		0.0033			
Δ9-THC	< LOQ		0.0033			
THC-A	< LOQ		0.0033			
THC-Total	< LOQ		0.0061			
THCV†	< LOQ		0.0033			
THCV-A†	< LOQ		0.0033			
THCV-Total†	< LOQ		0.0061			

Microbiology								
Analyte	Result	Limits	Units	LOQ	Batch	Analyze	Method	Notes
Mold (RAPID Petrifilm)	< LOQ		cfu/g	10	1907663	08/28/19	AOAC 2014.05 (RAPID)	X
Yeast (RAPID Petrifilm)	< LOQ		cfu/g	10	1907663	08/28/19	AOAC 2014.05 (RAPID)	X

Test results relate only to the parameters tested and to the samples as received by the laboratory. Test results meet all requirements of NELAP and the Pixis quality assurance plan unless otherwise noted. This report shall not be reproduced, except in full, without the written consent of this laboratory. Samples will be kept a maximum of 15 days from the report date unless prior arrangements have been made.

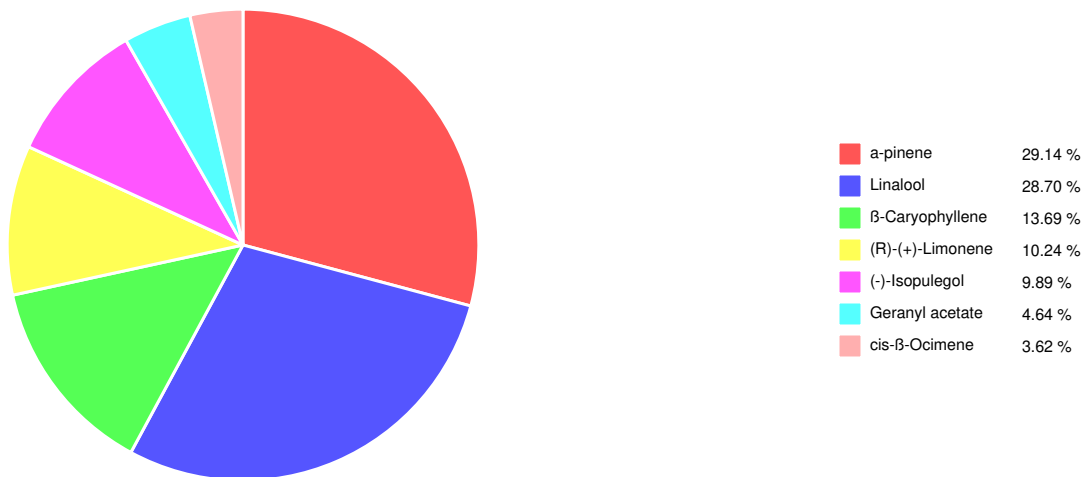


Terpenes				Method J AOAC 2015 V98-6	Units %	Batch 1907722	Analyze 08/27/19 11:49 AM			
Analyte	Result	LOQ	% of Total	Notes	Analyte	Result	LOQ	% of Total	Notes	
a-pinene <sup>†</sup>	0.132	0.020	29.14%		Linalool <sup>†</sup>	0.130	0.020	28.70%		
β-Caryophyllene <sup>†</sup>	0.0620	0.020	13.69%		(R)-(+)-Limonene <sup>†</sup>	0.0464	0.020	10.24%		
(-)-Isopulegol <sup>†</sup>	0.0448	0.020	9.89%		Geranyl acetate <sup>†</sup>	0.0210	0.020	4.64%		
cis-β-Ocimene <sup>†</sup>	0.0164	0.006	3.62%		trans-β-Ocimene <sup>†</sup>	< LOQ	0.013	0.00%		
(-)-a-Terpineol <sup>†</sup>	< LOQ	0.020	0.00%		(-)-caryophyllene oxide <sup>†</sup>	< LOQ	0.020	0.00%		
(-)-Guaiol <sup>†</sup>	< LOQ	0.020	0.00%		(-)-β-Pinene <sup>†</sup>	< LOQ	0.020	0.00%		
(+)-Borneol <sup>†</sup>	< LOQ	0.020	0.00%		(+)-Cedrol <sup>†</sup>	< LOQ	0.020	0.00%		
(+)-fenchol <sup>†</sup>	< LOQ	0.020	0.00%		(+)-Pulegone <sup>†</sup>	< LOQ	0.020	0.00%		
(±)-Camphor <sup>†</sup>	< LOQ	0.020	0.00%		(±)-cis-Nerolidol <sup>†</sup>	< LOQ	0.020	0.00%		
(±)-fenchone <sup>†</sup>	< LOQ	0.020	0.00%		(±)-trans-Nerolidol <sup>†</sup>	< LOQ	0.020	0.00%		
a-Bisabolol <sup>†</sup>	< LOQ	0.020	0.00%		a-cedrene <sup>†</sup>	< LOQ	0.020	0.00%		
a-phellandrene <sup>†</sup>	< LOQ	0.020	0.00%		a-Terpinene <sup>†</sup>	< LOQ	0.020	0.00%		
Camphene <sup>†</sup>	< LOQ	0.020	0.00%		d-3-Carene <sup>†</sup>	< LOQ	0.020	0.00%		
Eucalyptol <sup>†</sup>	< LOQ	0.020	0.00%		farnesene <sup>†</sup>	< LOQ	0.020	0.00%		
gamma-Terpinene <sup>†</sup>	< LOQ	0.020	0.00%		Geraniol <sup>†</sup>	< LOQ	0.020	0.00%		
Humulene <sup>†</sup>	< LOQ	0.020	0.00%		Isoborneol <sup>†</sup>	< LOQ	0.020	0.00%		
Menthol <sup>†</sup>	< LOQ	0.020	0.00%		nerol <sup>†</sup>	< LOQ	0.020	0.00%		
p-Cymene <sup>†</sup>	< LOQ	0.020	0.00%		Sabinene <sup>†</sup>	< LOQ	0.020	0.00%		
Sabinene hydrate <sup>†</sup>	< LOQ	0.020	0.00%		β-Myrcene <sup>†</sup>	< LOQ	0.020	0.00%		
Terpinolene <sup>†</sup>	< LOQ	0.020	0.00%		valencene <sup>†</sup>	< LOQ	0.020	0.00%		
<b>Total Terpenes</b>	<b>0.453</b>									





**Job Number:** 19-010195  
**Report Number:** 19-010195-00  
**Report Date:** 09/24/2019  
**ORELAP#:** OR100028  
**Purchase Order:**  
**Received:** 08/23/19 13:00





---

**Abbreviations**

**Limits:** Action Levels per OAR-333-007-0400, OAR-333-007-0210, OAR-333-007-0220

**Limit(s) of Quantitation (LOQ):** The minimum levels, concentrations, or quantities of a target variable (e.g., target analyte) that can be reported with a specified degree of confidence.

† = Analyte not NELAP accredited.

**Units of Measure**

cfu/g = Colony forming units per gram

g = Gram

ml = Milliliter

% = Percentage of sample

% wt =  $\mu\text{g/g}$  divided by 10,000

**Glossary of Qualifiers**

X: Not ORELAP accredited.

Approved Signatory

---

Derrick Tanner  
General Manager



12423 NE Whitaker Way Portland OR 97230 p.503-254-1794

**Cannabis Chain of Custody Record**

19-010195

ORELAP ID: OR100028

Company: <b>Nirvana CBD</b>		Analysis Requested											Purchase Order Number:				
Contact: <b>Patrick Mulcahy</b>		Pesticides - OR 59 compounds	Pesticide Multi-Residue - 379 compounds	Potency	Residual Solvents	Water Activity	Moisture	Terpenes	Micro: Yeast and Mold	Micro: E.Coli and Total Coliform	Heavy Metals	Mycotoxins	Other	Matrix	Weight	Serving size for edibles	Comments/Metric ID
Address: 11258 Monarch st unit A Garden Grove CA 92641																	
Email: <b>patrick@nirvancbd.com</b>		Project Name:															
Phone: <b>714-343-3409</b> Fax:		<input type="checkbox"/> Report Instructions: <input type="checkbox"/> Send to State - METRC <input type="checkbox"/> Email Final Results: <input type="checkbox"/> Fax Final Results <input type="checkbox"/> Cash/Check/CC/Net 30															
Processor's License: <b>N/A</b>		Other:															
Field ID	Date/Time Collected																
Tincture 500mg-Vanilla				X				X	X						30ml	Tincture	TAMC, TYMC, Sa, Pa, Ec, & Sa
Tincture 500mg-Strawberry				X				X	X						30ml	Tincture	TAMC, TYMC, Sa, Pa, Ec, & Sa
Tincture 500mg-Peppermint				X				X	X						30ml	Tincture	TAMC, TYMC, Sa, Pa, Ec, & Sa
Tincture 500mg-Grapefruit				X				X	X						30ml	Tincture	TAMC, TYMC, Sa, Pa, Ec, & Sa
Body Lotion 600mg				X				X	X						100ml	Topical	TAMC, TYMC, Sa & Pa
Muscle Recovery Lotion 600mg				X				X	X						100ml	Topical	TAMC, TYMC, Sa & Pa
Roll-Oil On 150mg				X				X	X						30ml	Topical	TAMC, TYMC, Sa & Pa

Collected By:	Relinquished By:	Date	Time	Received by:	Date	Time	Lab Use Only:
<input checked="" type="checkbox"/> Standard (5 day) <input type="checkbox"/> Rush (3-4 day) (1.5x Standard) <input type="checkbox"/> Priority Rush (2 day) (2x Standard)	Patrick Mulcahy	8/9/19		<i>[Signature]</i>	8/23/19	1300	Client Alias: Order Number: Proper Container Sample Condition Temperature: <i>26.0</i> Shipped Via: Evidence of cooling: <input type="checkbox"/> No

SUBMISSION OF SAMPLES WITH TESTING REQUIREMENTS TO PIXIS WILL BE UNDERSTOOD TO BE AN AGREEMENT FOR SERVICES IN ACCORDANCE WITH THE CONDITIONS LISTED ON THE BACK OF THIS FORM

Revision: 2.00 Control#: CF023 Effective 04/29/2019 Revised 04/29/2019

www.pixislabs.com www.columbiafoodlab.com

\* NO Rec form - Bm 8-23-19

Page 1 of 2

Test results relate only to the parameters tested and to the samples as received by the laboratory. Test results meet all requirements of NELAP and the Pixis quality assurance plan unless otherwise noted. This report shall not be reproduced, except in full, without the written consent of this laboratory. Samples will be kept a maximum of 15 days from the report date unless prior arrangements have been made.



12423 NE Whitaker Way  
Portland, OR 97230  
503-254-1794

Job Number: 19-010195  
Report Number: 19-010195-00  
Report Date: 09/24/2019  
ORELAP#: OR100028  
Purchase Order:  
Received: 08/23/19 13:00



12423 NE Whitaker Way Portland OR 97230 p.503-254-1794

**Cannabis Chain of Custody Record**

**PRICING AND CHARGES**

Prices to be charged for work performed for CUSTOMER are those currently published in the Columbia Food Laboratories, Inc. DBA Pixis Labs (herein referred to as "the LAB", where Columbia Food Laboratories, Inc. & Pixis Labs can be used interchangeably) standard price book unless otherwise agreed in writing by the CUSTOMER and the LAB. CUSTOMER must notify the LAB of price quotation at the time of the transfer of sample(s) to the LAB. Any cancellation of testing requirements will result in charges being assessed on all testing completed prior to the notice of cancellation. Unless otherwise agreed upon, samples containing hazardous material will be shipped back to client at their expense, or disposed of at a certain fee, waste category dependent. New accounts are accepted with full payment in advance by cash, check, Visa or Mastercard. A credit line may be established with an approved credit application.

**DELIVERY AND LIABILITY LIMITATIONS**

The specific format of the goods will be defined by CUSTOMER to the LAB upon delivery of the sample(s) to the LAB. The LAB will analyze samples provided by CUSTOMER as requested by CUSTOMER in accordance with the procedures documented in the Quality Assurance Plan (QAP). Samples are retained for 30 days after receipt. If additional time is desired, then a written request is required and an additional monthly fee will apply. This price quote is only valid for one year.

**CONFIDENTIALITY**

The LAB will treat all information regarding work performed for CUSTOMER as proprietary and confidential. No CUSTOMER information will be released to third persons without the written request of the CUSTOMER.

**LIMITATION OF LIABILITY AND WARRANTY**

The LAB gives no warranty, express or implied, or of fitness for a particular purpose, in connection with its analytical testing or reporting. Any liability of the LAB to CUSTOMER or any third party shall be limited to the cost of analysis charged to CUSTOMER.

**PAST DUE ACCOUNTS**

Credit line account are payable within 30 days. Accounts that are 60 days past due will incur 1 1/2% per month on all past due sums until paid in full and will automatically default to cash on delivery (COD). Reports will not be released unless payment on past and current invoices are received. Customer agrees to pay the interest as a service charge and all the LAB's collection costs, including reasonable attorney fees.

**EXPERT TESTIMONY AND COURT APPEARANCES**

In the event CUSTOMER requires the further written opinion or testimony of any employee of the LAB, including response to a subpoena issued by CUSTOMER or any third person, CUSTOMER agrees to pay such additional fees and expenses as may be reasonably assessed by the LAB.

**ALTERNATIVE DISPUTE RESOLUTION (ADR)**

Any disputes arising out of this Agreement or the analytical testing or reporting by the LAB shall be settled through mediation and/or arbitration rather than litigation, and the cost of the ADR shall be borne equally by both parties.

**APPLICABLE LAW**

Legal matters arising from work performed by the LAB for CUSTOMER will be construed and interpreted in accordance with the laws for the state of Oregon. When sending, transferring, or submitting samples, the CUSTOMER assumes full responsibility for complying with all applicable state and federal laws.



Laboratory Terpene Quality Control Results

EPA5035				Batch ID: 1907722					
Method Blank				Laboratory Control Sample					
Analyte	Result	Blank	Notes	Result	LCS Spike	Units	LCS% Rec	Limits	Notes
a-pinene	ND	< 200		462	500	µg/g	92.4	70 - 130	
Camphene	ND	< 200		452	500	µg/g	90.4	70 - 130	
Sabinene	ND	< 200		476	500	µg/g	95.3	70 - 130	
b-Pinene	ND	< 200		477	500	µg/g	95.3	70 - 130	
b-Myrcene	ND	< 200		458	500	µg/g	91.6	70 - 130	
a-phellandrene	ND	< 200		494	500	µg/g	98.9	70 - 130	
d-3-Carene	ND	< 200		483	500	µg/g	96.7	70 - 130	
a-Terpinene	ND	< 200		493	500	µg/g	98.5	70 - 130	
p-Cymene	ND	< 200		463	500	µg/g	92.5	70 - 130	
D-Limonene	ND	< 200		481	500	µg/g	96.2	70 - 130	
Eucalyptol	ND	< 200		435	500	µg/g	87.0	70 - 130	
b-cis-OCimene	ND	< 66.7		134	167	µg/g	80.4	70 - 130	
b-trans-OCimene	ND	< 133		332	333	µg/g	99.7	70 - 130	
g-Terpinene	ND	< 200		481	500	µg/g	96.1	70 - 130	
Sabinene Hydrate	ND	< 200		472	500	µg/g	94.4	70 - 130	
Terpinolene	ND	< 200		465	500	µg/g	92.9	70 - 130	
D-Fenchone	ND	< 200		457	500	µg/g	91.3	70 - 130	
Linalool	ND	< 200		475	500	µg/g	94.9	70 - 130	
Fenchol	ND	< 200		471	500	µg/g	94.2	70 - 130	
Camphor	ND	< 200		457	500	µg/g	91.4	70 - 130	
Isopulego	ND	< 200		473	500	µg/g	94.5	70 - 130	
Isoborneol	ND	< 200		468	500	µg/g	93.6	70 - 130	
Borneol	ND	< 200		452	500	µg/g	90.5	70 - 130	
DL-Menthol	ND	< 200		485	500	µg/g	97.0	70 - 130	
Terpineol	ND	< 200		435	500	µg/g	87.1	70 - 130	
Nerol	ND	< 200		520	500	µg/g	104.0	70 - 130	
Pulegone	ND	< 200		498	500	µg/g	99.6	70 - 130	
Geraniol	ND	< 200		387	500	µg/g	77.5	70 - 130	
Geranyl Acetate	ND	< 200		462	500	µg/g	92.3	70 - 130	
a-Cedrene	ND	< 200		468	500	µg/g	93.7	70 - 130	
b-Caryophyllene	ND	< 200		541	500	µg/g	108.2	70 - 130	
a-Humulene	ND	< 200		479	500	µg/g	95.8	70 - 130	
Valenene	ND	< 200		507	500	µg/g	101.3	70 - 130	
cis-Nerolidol	ND	< 200		522	500	µg/g	104.3	70 - 130	
a-Farnesene	ND	< 200		607	500	µg/g	121.5	70 - 130	
trans-Nerolidol	ND	< 200		479	500	µg/g	95.7	70 - 130	
Caryophyllene Oxide	ND	< 200		484	500	µg/g	96.8	70 - 130	
Guaiol	ND	< 200		480	500	µg/g	95.9	70 - 130	
Cedrol	ND	< 200		471	500	µg/g	94.2	70 - 130	
a-Bisabolol	ND	< 200		478	500	µg/g	95.6	70 - 130	





Sample/Sample Duplicate      Sample ID: 19-009851-0006

Analyte	Result	Org. Result	LOQ	Units	PPD, %	Sample Duplicate %	Limits	Notes
a-pinene	ND	NC	200	µg/g	0	< 20	80 - 120	
Camphene	ND	NC	200	µg/g	0	< 20	80 - 120	
Sabinene	ND	NC	200	µg/g	0	< 20	80 - 120	
b-Pinene	ND	NC	200	µg/g	0	< 20	80 - 120	
b-Myrcene	342.1	337.7	200	µg/g	0.6E	< 20	80 - 120	
a-phellandrene	ND	NC	200	µg/g	0	< 20	80 - 120	
d-3-Carene	ND	NC	200	µg/g	0	< 20	80 - 120	
a-Terpinene	ND	NC	200	µg/g	0	< 20	80 - 120	
p-Cymene	ND	NC	200	µg/g	0	< 20	80 - 120	
D-Limonene	482.9	457.5	200	µg/g	2.7C	< 20	80 - 120	
Eucalyptol	ND	NC	200	µg/g	0	< 20	80 - 120	
b-cis-Comene	ND	NC	66.7	µg/g	0	< 20	80 - 120	
b-trans-Comene	ND	NC	133	µg/g	0	< 20	80 - 120	
g-Terpinene	ND	NC	200	µg/g	0	< 20	80 - 120	
Sabinene Hydrate	ND	NC	200	µg/g	0	< 20	80 - 120	
Terpinolene	ND	NC	200	µg/g	0	< 20	80 - 120	
D-Fenchone	ND	NC	200	µg/g	0	< 20	80 - 120	
Linalool	ND	NC	200	µg/g	0	< 20	80 - 120	
Fenchol	ND	NC	200	µg/g	0	< 20	80 - 120	
Camphor	ND	NC	200	µg/g	0	< 20	80 - 120	
Isopulego	ND	NC	200	µg/g	0	< 20	80 - 120	
Isoborneol	ND	NC	200	µg/g	0	< 20	80 - 120	
Borneol	ND	NC	200	µg/g	0	< 20	80 - 120	
DL-Menthol	ND	NC	200	µg/g	0	< 20	80 - 120	
Terpineol	ND	NC	200	µg/g	0	< 20	80 - 120	
Nerol	ND	NC	200	µg/g	0	< 20	80 - 120	
Pulegone	ND	NC	200	µg/g	0	< 20	80 - 120	
Geraniol	ND	NC	200	µg/g	0	< 20	80 - 120	
Geranyl Acetate	ND	NC	200	µg/g	0	< 20	80 - 120	
a-Cedrene	ND	NC	200	µg/g	0	< 20	80 - 120	
b-Caryophyllene	1760	1748	200	µg/g	0.34	< 20	80 - 120	
a-Humulene	ND	NC	200	µg/g	0	< 20	80 - 120	
Valenene	ND	NC	200	µg/g	0	< 20	80 - 120	
cis-Nerolidol	ND	NC	200	µg/g	0	< 20	80 - 120	
a-Farnesene	ND	NC	200	µg/g	0	< 20	80 - 120	
trans-Nerolidol	ND	NC	200	µg/g	0	< 20	80 - 120	
Caryophyllene Oxide	ND	NC	200	µg/g	0	< 20	80 - 120	
Guaiol	ND	NC	200	µg/g	0	< 20	80 - 120	
Cedrol	ND	NC	200	µg/g	0	< 20	80 - 120	
a-Bisabolol	ND	NC	200	µg/g	0	< 20	80 - 120	



Laboratory Quality Control Results

JAOAC2015 V986 Batch ID: 1907845

Laboratory Control Sample									
Analyte	Result	Spike	Units	% Rec	Limits		Evaluation	Notes	
CBDVA	0.00947	0.01	%	94.7	85	- 115	Acceptable		
CBDV	0.00935	0.01	%	93.5	85	- 115	Acceptable		
CBD-A	0.00951	0.01	%	95.1	85	- 115	Acceptable		
CBG-A	0.00941	0.01	%	94.1	85	- 115	Acceptable		
CBG	0.00939	0.01	%	93.9	85	- 115	Acceptable		
CBD	0.00978	0.01	%	97.8	85	- 115	Acceptable		
THCV	0.00943	0.01	%	94.3	85	- 115	Acceptable		
THCVA	0.00940	0.01	%	94.0	85	- 115	Acceptable		
CBN	0.00976	0.01	%	97.6	85	- 115	Acceptable		
THC	0.00955	0.01	%	95.5	85	- 115	Acceptable		
D8THC	0.00937	0.01	%	93.7	85	- 115	Acceptable		
CBL	0.00962	0.01	%	96.2	85	- 115	Acceptable		
CBG	0.00945	0.01	%	94.5	85	- 115	Acceptable		
THCA	0.00967	0.01	%	96.7	85	- 115	Acceptable		
CBGA	0.00931	0.01	%	93.1	85	- 115	Acceptable		

Method Blank

Analyte	Result	LOQ	Units	Limits		Evaluation	Notes	
CBDVA	ND	0.003	%	< 0.003		Acceptable		
CBDV	ND	0.003	%	< 0.003		Acceptable		
CBD-A	ND	0.003	%	< 0.003		Acceptable		
CBG-A	ND	0.003	%	< 0.003		Acceptable		
CBG	ND	0.003	%	< 0.003		Acceptable		
CBD	ND	0.003	%	< 0.003		Acceptable		
THCV	ND	0.003	%	< 0.003		Acceptable		
THCVA	ND	0.003	%	< 0.003		Acceptable		
CBN	ND	0.003	%	< 0.003		Acceptable		
THC	ND	0.003	%	< 0.003		Acceptable		
D8THC	ND	0.003	%	< 0.003		Acceptable		
CBL	ND	0.003	%	< 0.003		Acceptable		
CBG	ND	0.003	%	< 0.003		Acceptable		
THCA	ND	0.003	%	< 0.003		Acceptable		
CBGA	ND	0.003	%	< 0.003		Acceptable		

Abbreviations

- ND - None Detected at or above MRL
- RPD - Relative Percent Difference
- LOQ - Limit of Quantitation

Units of Measure:

% - Percent



JAOAC2015 V986		Batch ID: 1907845						
Sample Duplicate		Sample ID: 19-010155-0001						
Analyte	Result	Org. Result	LOQ	Units	RPD	Limits	Evaluation	Notes
CBDA	ND	ND	0.003	%	0	< 20	Acceptable	
CBV	ND	ND	0.003	%	0	< 20	Acceptable	
CBDA-A	ND	ND	0.003	%	0	< 20	Acceptable	
CBG-A	ND	ND	0.003	%	0	< 20	Acceptable	
CBG	ND	ND	0.003	%	0	< 20	Acceptable	
CB	0.0174	0.0145	0.003	%	18.2	< 20	Acceptable	
THCV	ND	ND	0.003	%	0	< 20	Acceptable	
THCVA	ND	ND	0.003	%	0	< 20	Acceptable	
CBN	ND	ND	0.003	%	0	< 20	Acceptable	
THC	0.00537	0.00450	0.003	%	17.6	< 20	Acceptable	
D8THC	ND	ND	0.003	%	0	< 20	Acceptable	
CBL	ND	ND	0.003	%	0	< 20	Acceptable	
CB	ND	ND	0.003	%	0	< 20	Acceptable	
THCA	0.0167	0.0142	0.003	%	16.2	< 20	Acceptable	
CBDA	ND	ND	0.003	%	0	< 20	Acceptable	

**Abbreviations**

- ND - None Detected at or above MRL
- RPD - Relative Percent Difference
- LOQ - Limit of Quantitation

**Units of Measure:**

- % - Percent



Explanation of QC Flag Comments:

Code	Explanation
Q	Matrix interferences affecting spike or surrogate recoveries.
Q1	Quality control result biased high. Only non-detect samples reported.
Q2	Quality control outside QC limits. Data considered estimate.
Q3	Sample concentration greater than four times the amount spiked.
Q4	Non-homogenous sample matrix, affecting RPD result and/or % recoveries.
Q5	Spike results above calibration curve.
Q6	Quality control outside QC limits. Data acceptable based on remaining QC.
R	Relative percent difference (RPD) outside control limit.
R1	RPD non-calculable, as sample or duplicate results are less than five times the LOQ.
R2	Sample replicates RPD non-calculable, as only one replicate is within the analytical range.
LOQ1	Quantitation level raised due to low sample volume and/or dilution.
LOQ2	Quantitation level raised due to matrix interference.
B	Analyte detected in method blank, but not in associated samples.
B1	The sample concentration is greater than 5 times the blank concentration.
B2	The sample concentration is less than 5 times the blank concentration.